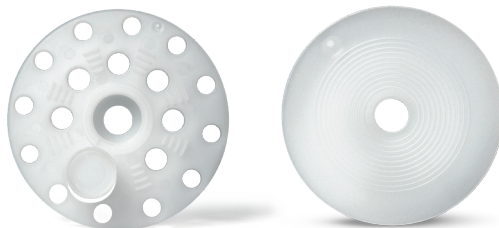
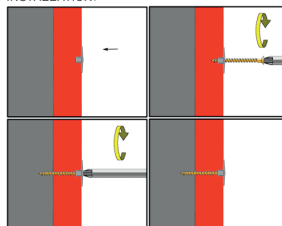


# TTP TIT



Insulation plate is used for fixing insulation material (polystyrene or mineral wool) into wood construction, wood, chipboard or plywood. Insulation plate TTP is equip with special cap which prevent creation of thermal bridge. The plate is produced from quality Copolymer.

INSTALLATION:



#### APPLICATION

- > wood
- > plywood
- > chipboard



#### MATERIAL

Copolymer



#### ADVANTAGES

- > low price
- > easy installation
- > no thermal bridge (TTP)

#### TECHNICAL DATA:

Size	Hole $\varnothing$	Screw $\varnothing$	Plate $\varnothing$	Plate high	Min. fixing depth
40/6	6,0	5-6	40	4	20
60/5	5,0	5	60	10	20
60/5-20	7,5	5-7,5	60	20	20

All figures are in mm

INSULATION PLATES

TTP, TIT

TRUHLÁŘ a spol., s.r.o.

Hlavní 812, 251 68 Hlubočinka, Czech Republic | tel.: +420 323 671 745 | fax: +420 323 671 744 | e-mail: export@ttt.cz

