

Universal Anchors (Polyamide) TX-PA



Plug for universal use made of Polyamide PA6 (TX-PA). It is held through internal pressure against the inside of the hole into solid materials and it is held in place by segments knotting behind the drill hole into the cavity.

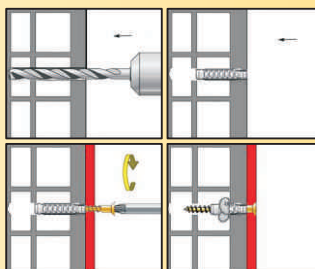
Application:

- hollow or full brick
- gas concrete
- concrete
- sand-stone
- chipboard
- gypsum plasterboard

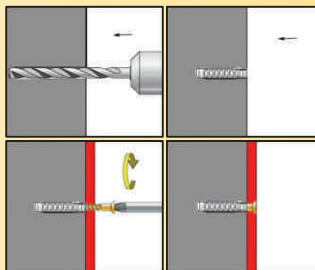
Advantages:

- high quality
- fast installation
- strong anchoring
- usage in many materials

Installation hollow material



Installation full material



Material: Polyamide PA6 (Nylon)

Type TX-PA - Technical data and price

Size	Drill \varnothing	Minimal drill depth	Anchor length	Screw \varnothing	Recommended loads	Basic price / 100 pcs	
						box	bulk
5 x 25	5	35	25	3 - 4	0,60	1,19 €	1,08 €
6 x 30	6	40	30	4 - 5	0,70	1,62 €	1,50 €
8 x 40	8	50	40	4,5 - 6	1,10	2,46 €	2,27 €
10 x 50	10	70	50	6 - 8	1,50	4,42 €	4,04 €
12 x 60	12	80	60	8 - 10	1,70	6,89 €	6,12 €

All figures are in mm

Diameter 12 mm is not recommended to use in hollow materials

Recommended loads in kN

(1 kN \approx 100 Kg)